

SERIES LTC200

ESBE®
NO.1 IN HYDRONIC SYSTEM CONTROL

Mtr.lnr: 9814 04 60 • Ritn.nnr: 4744 utg. C • Rev. 1412



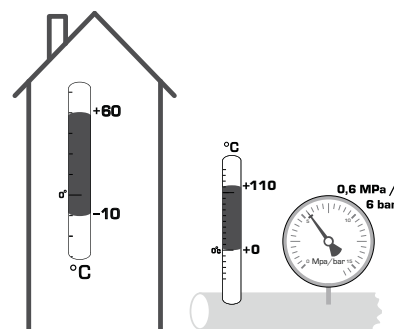
Series LTC261
Series LTC271

CE

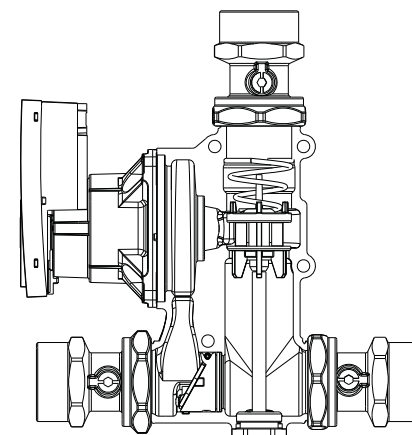
LVD2006/95/EC
EMC2004/108/EC
RoHS2011/65/EC
PED97/23/EC, article 3.3



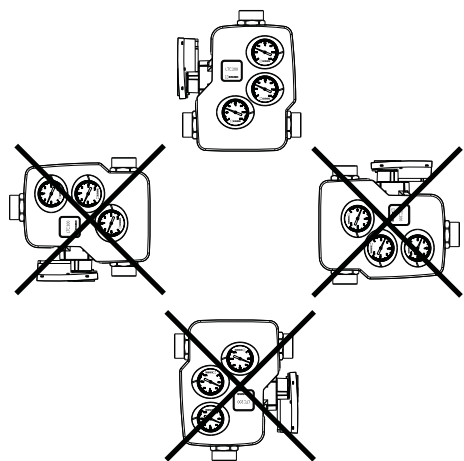
ErP 2009/125/EC



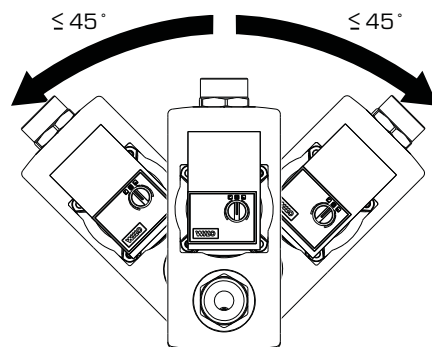
i



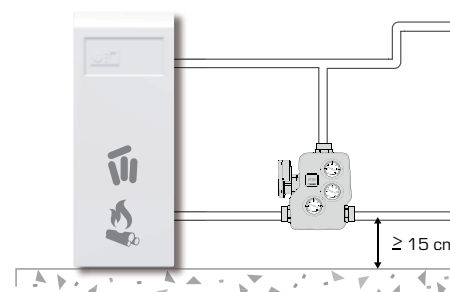
1



2

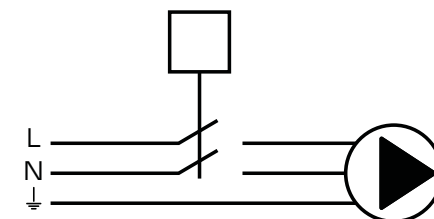


3



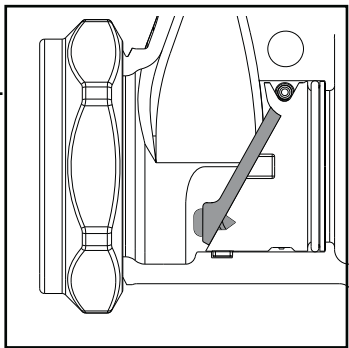
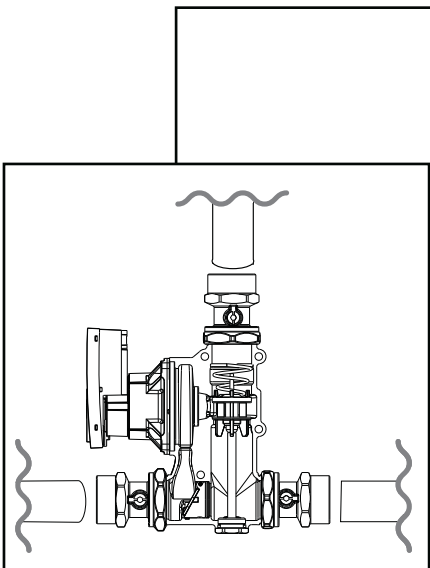
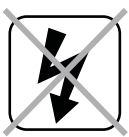
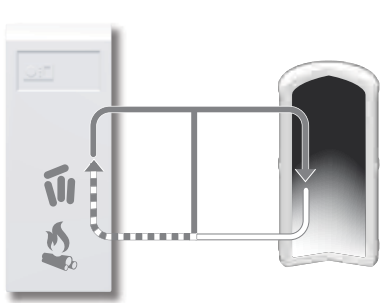
i

230 VAC, 50Hz

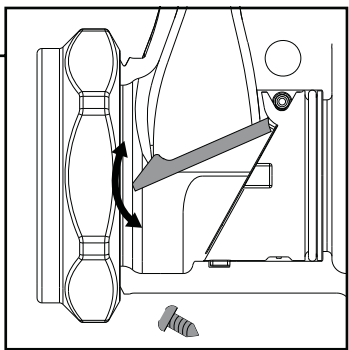
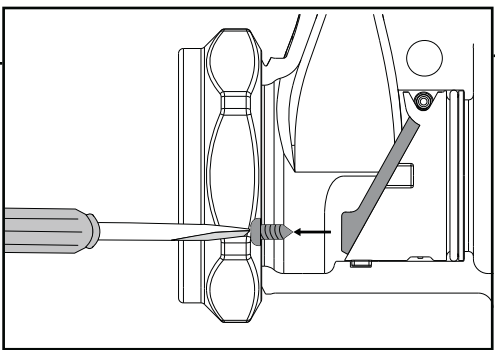
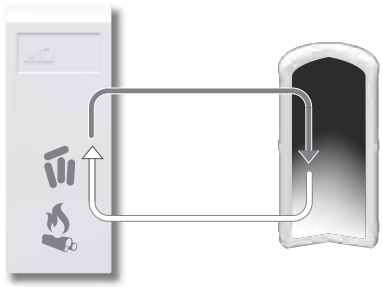
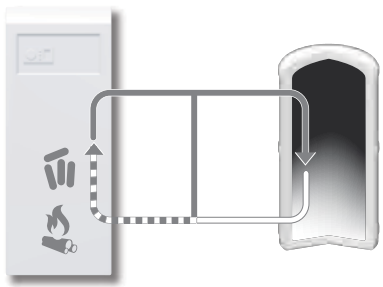


4

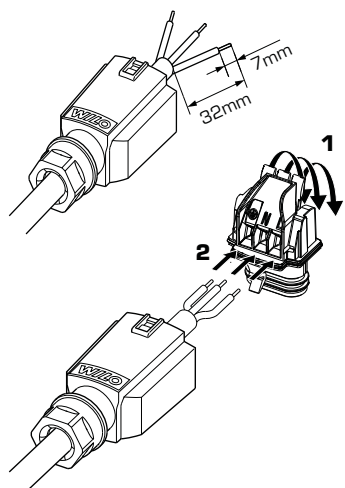
a



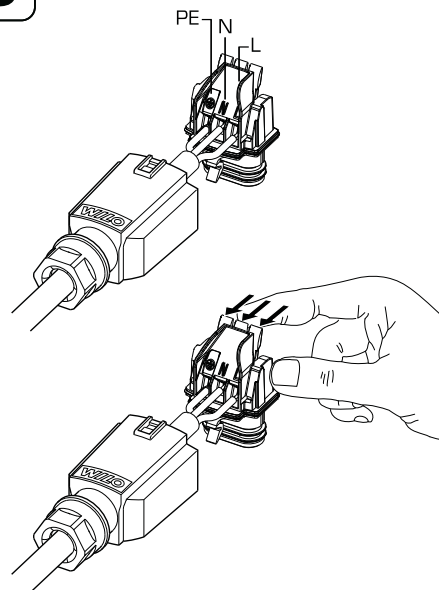
b



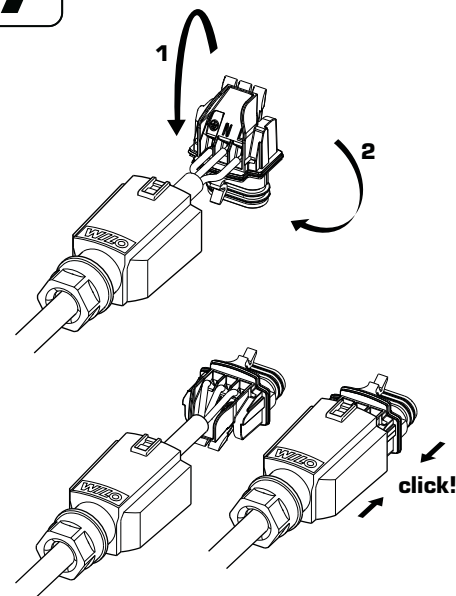
5



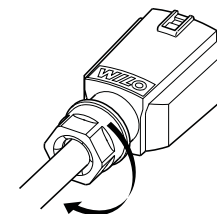
6



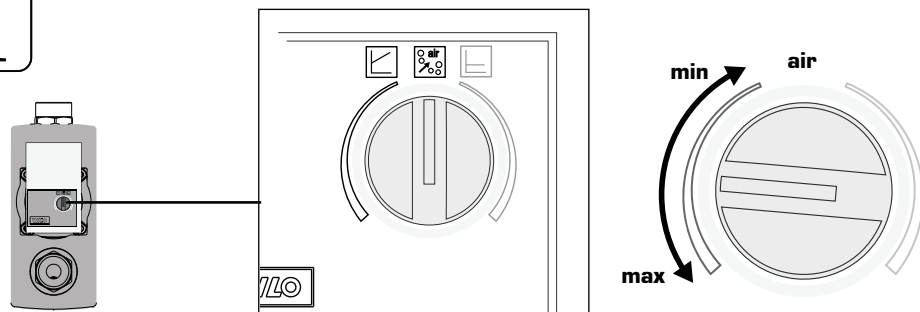
7



8

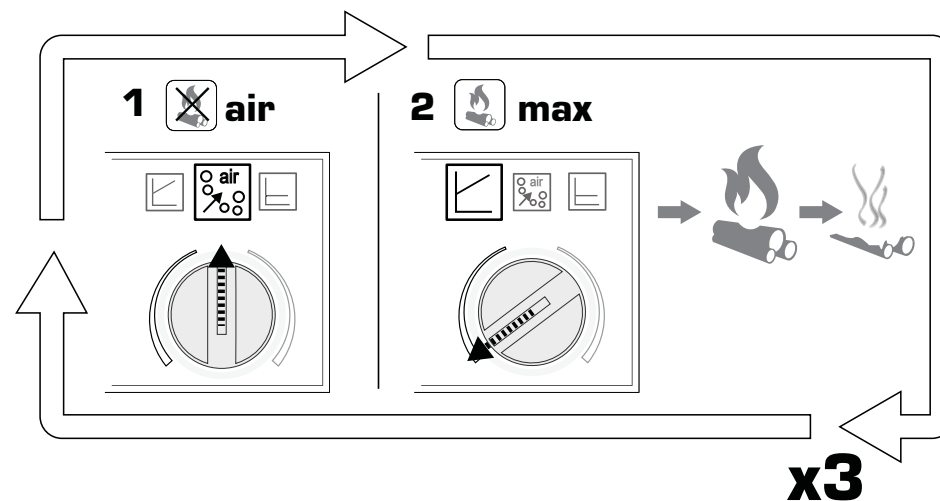


i



9

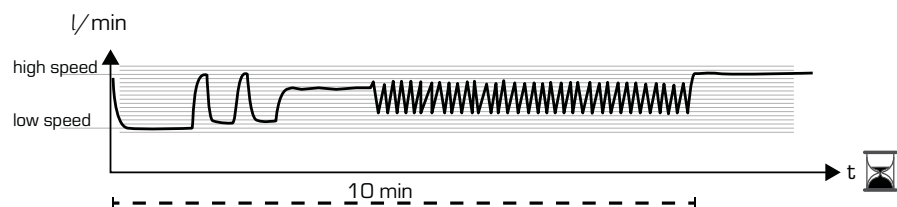
Air venting at commissioning



i



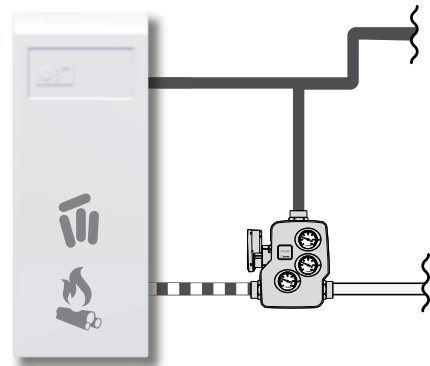
Automatic air venting routine



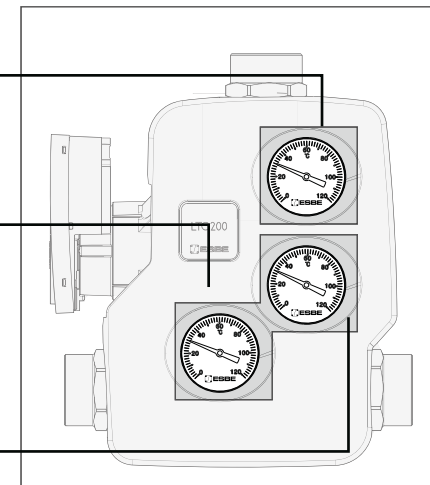
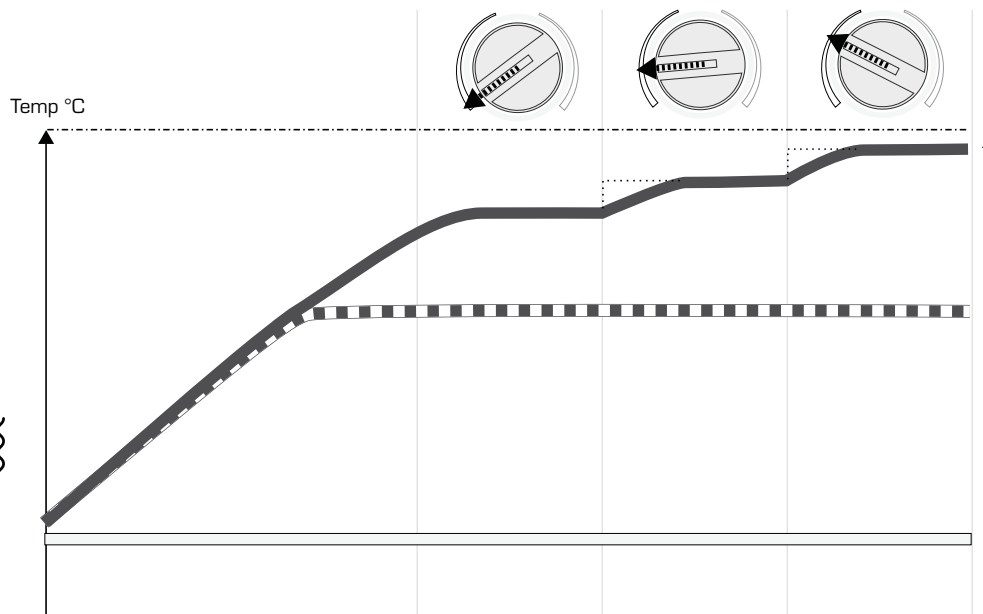
10



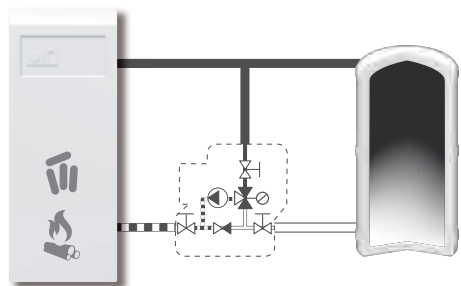
Optimising load temperature



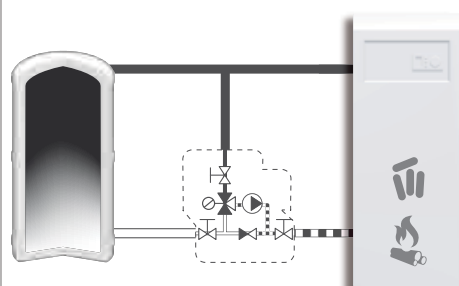
Temp °C



i

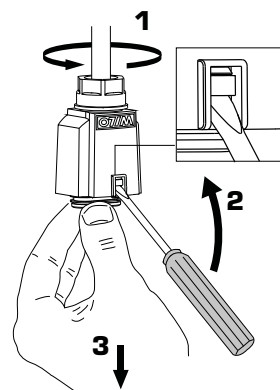


i



Piping Schematics are General Representations

i



i



www.esbe.eu